

Installation and Operating Manual

LumiCam / LumiCamAX Software 3

| | |
|---------|------------------------------------|
| date | 12. January 2017 |
| version | LumiCam 3 |
| author | F.H. Papenmeier GmbH & Co. KG / LV |

Index:

| | |
|---------------------------------------------------|----|
| 1. General | 3 |
| 1.1. Introduction | 3 |
| 2. Installation | 4 |
| 2.1. DriverTool | 4 |
| 2.2. LumiCam | 7 |
| 2.3. Establishing the LumiCam camera system | 11 |
| 3. LumiCam: Handling..... | 14 |
| 3.1. User authorization..... | 14 |
| 3.2. Options | 15 |
| 4. LumiCamAX: Setting the software | 16 |
| 4.1. Functions | 16 |
| 4.2. Record parameter | 17 |
| 4.3. Menu bar and keyboard..... | 18 |
| 4.4. Status | 19 |
| 5. Appendix | 20 |
| 5.1. Error message | 20 |
| 5.2. Manufacturer..... | 21 |

1. General

1.1 Introduction

The LumiCam/LumiCamAX Software is a product of F.H. Papenmeier GmbH & Co. KG, Germany.

The manual contains introductions for setting up the software, using a Microsoft® Windows® computers.

Microsoft and Windows is a registered trademark in the united states of America of Microsoft Corporation.

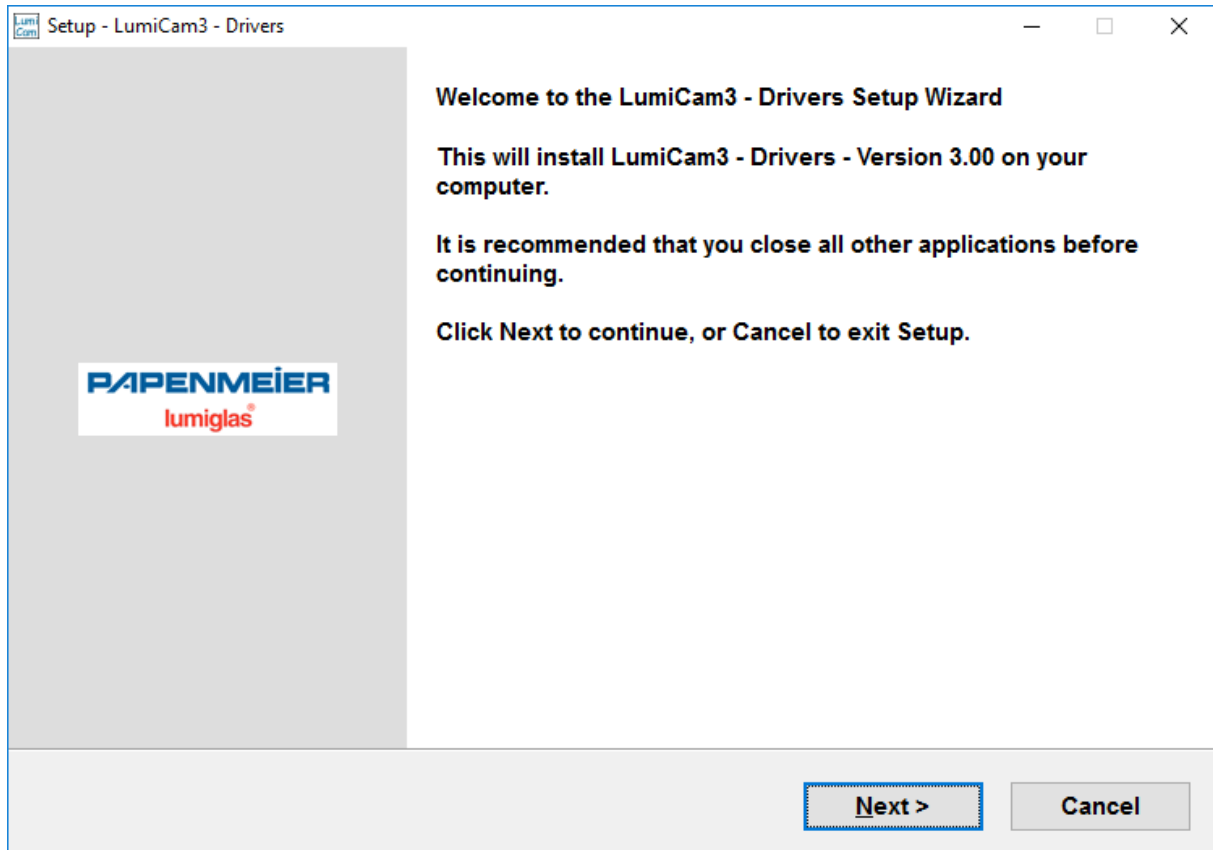
We reserve the right to change the content of this manual without notice. All risks that may result from using this manual, remains with the user.

The liability for technical or editorial mistakes, as well as omissions in this document, are excluded by F.H. Papenmeier GmbH & Co. KG.

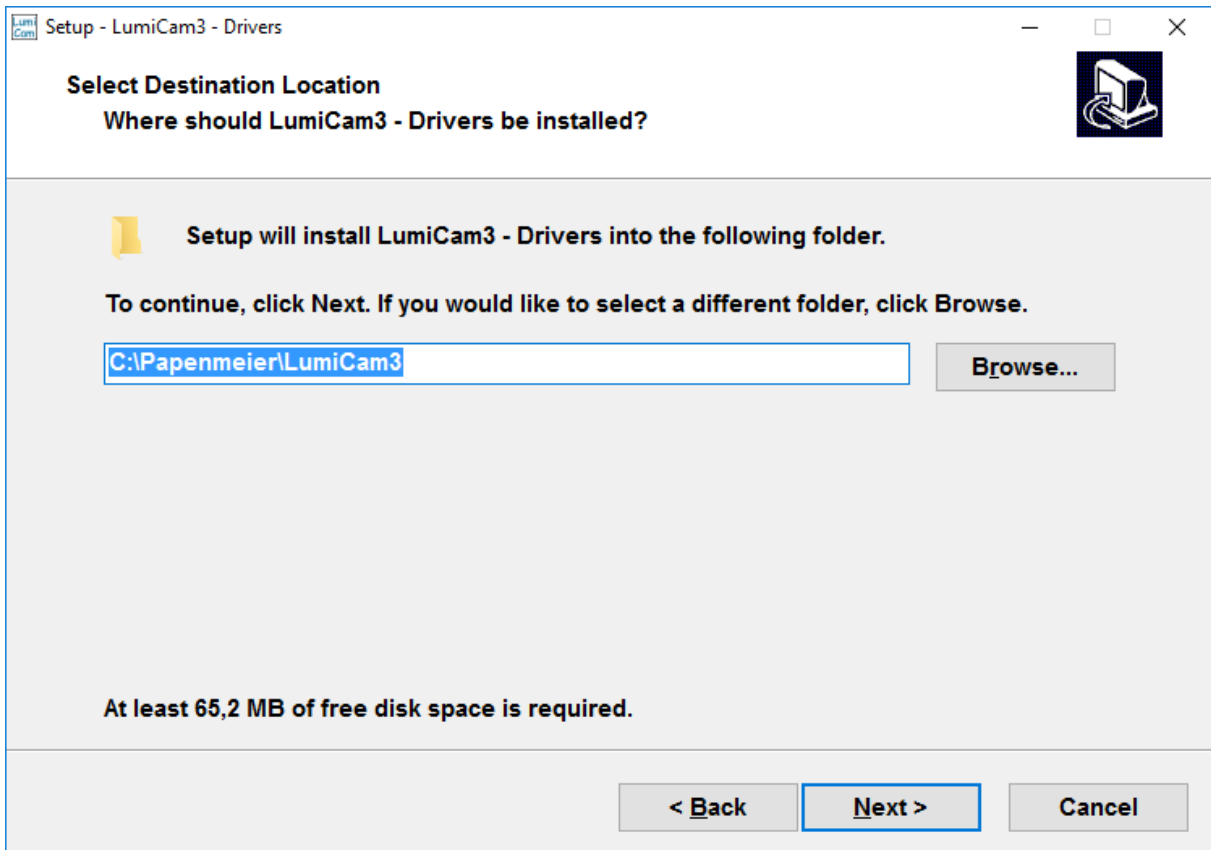
2. Installation

2.1 DriverTool

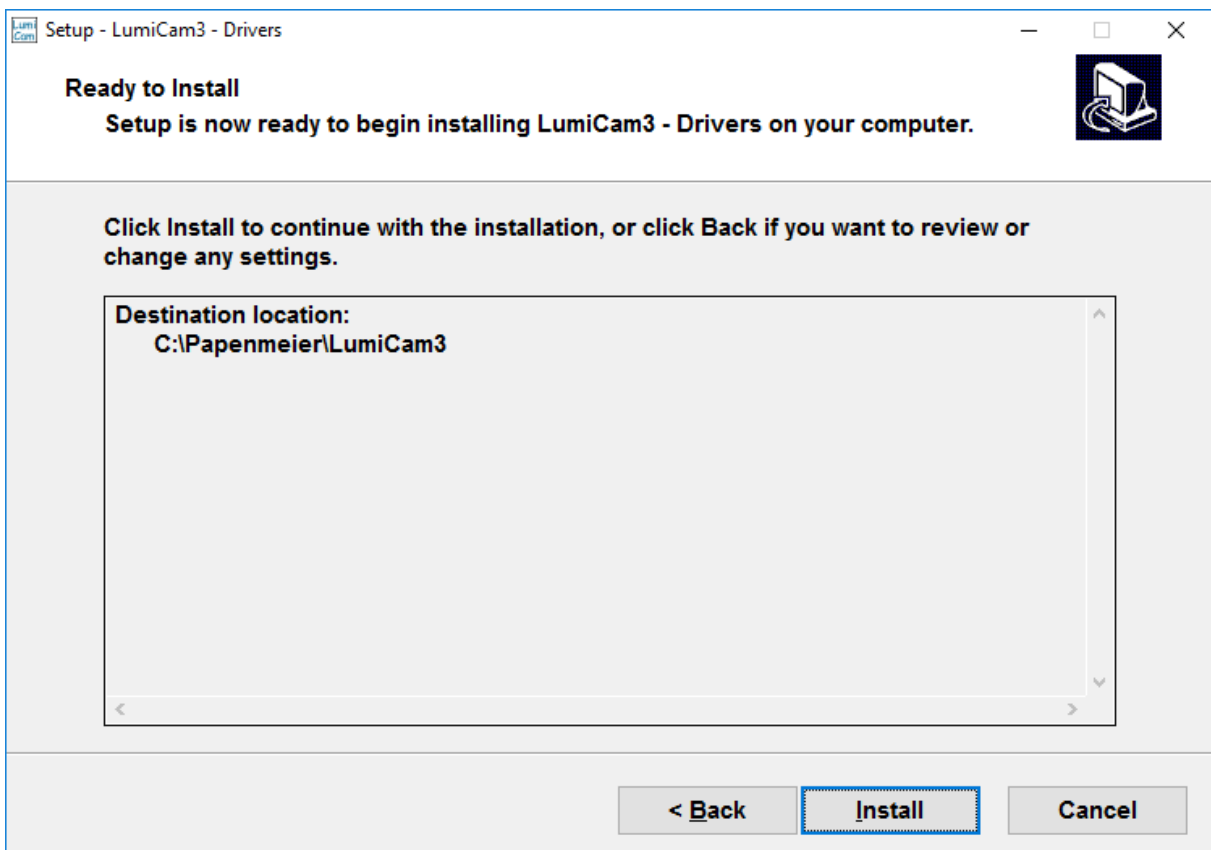
Insert the DVD and start the installation. At first execute the **LC3Drivers.exe** . After that, you will get the following window:



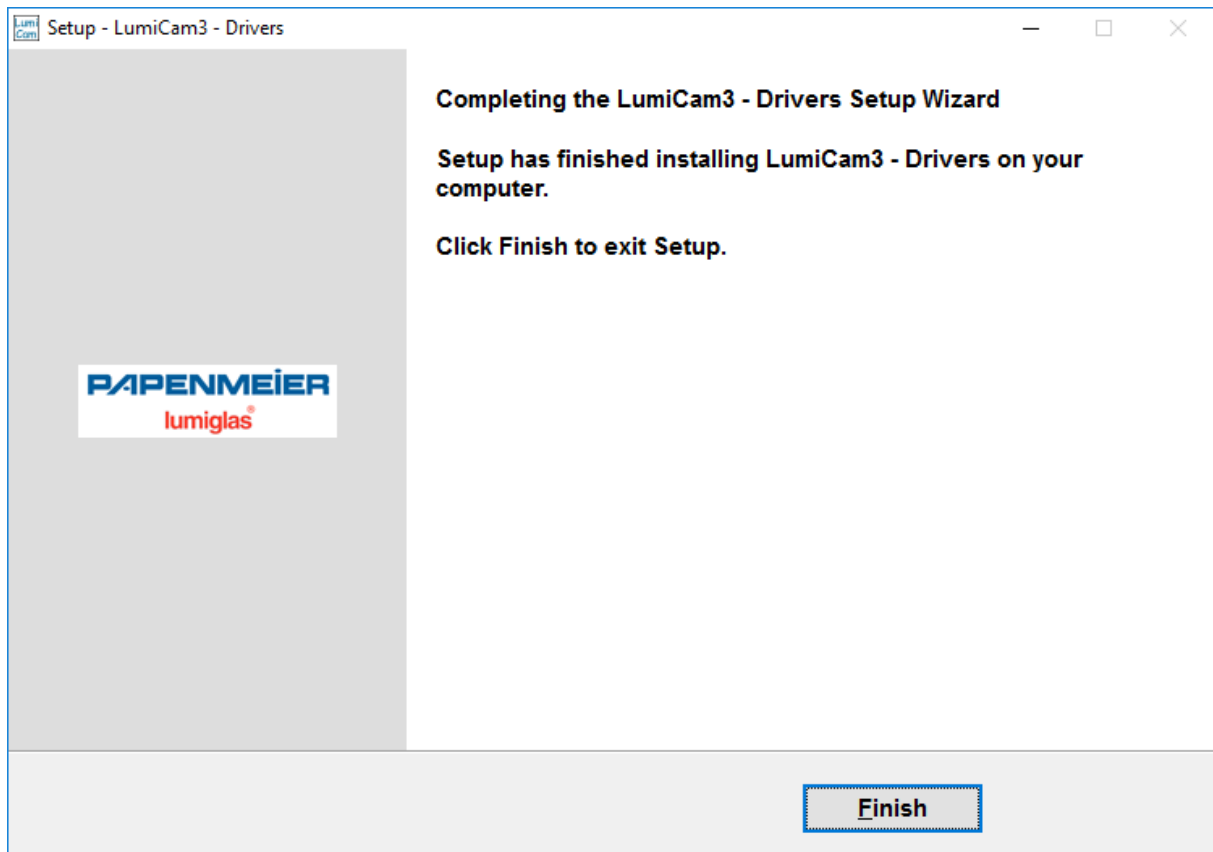
Press: "Next"



Press "Next" or change the data path to continue.



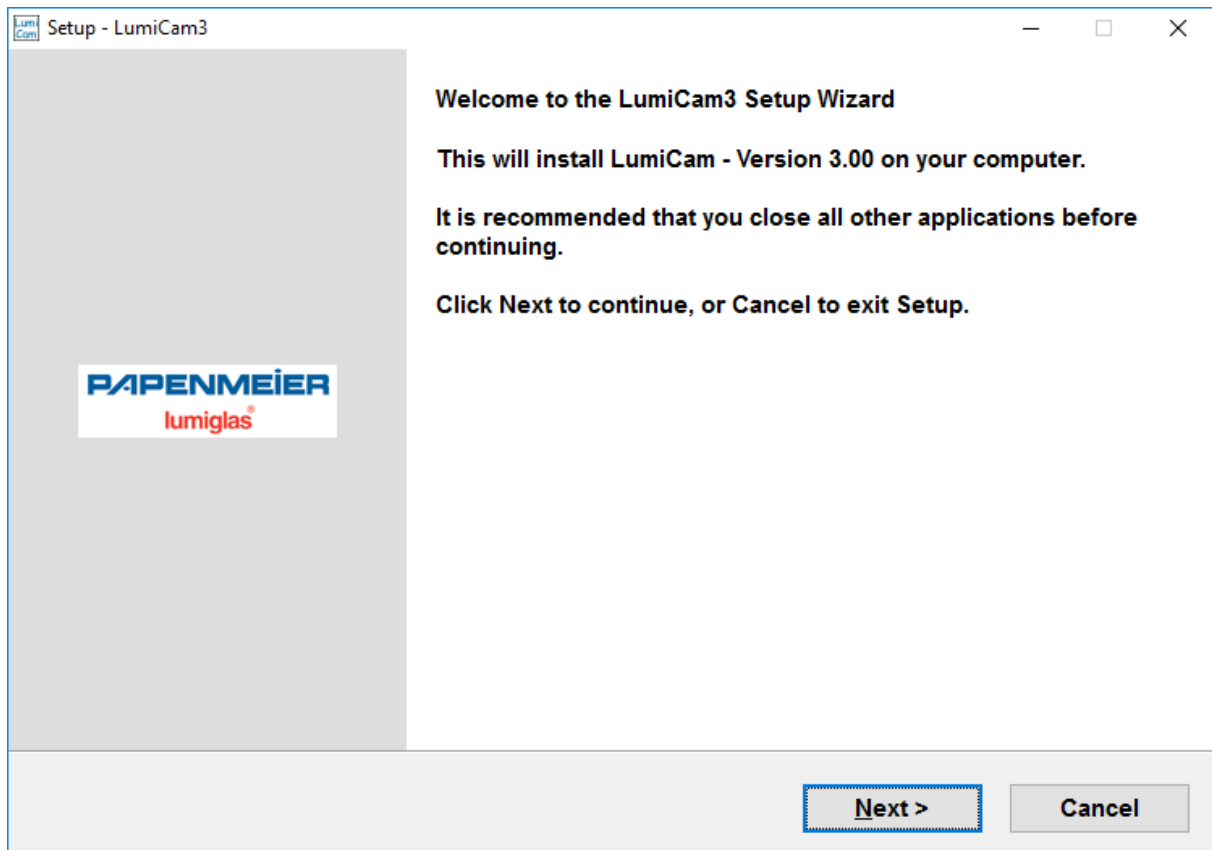
Press "Install" to start the installation.



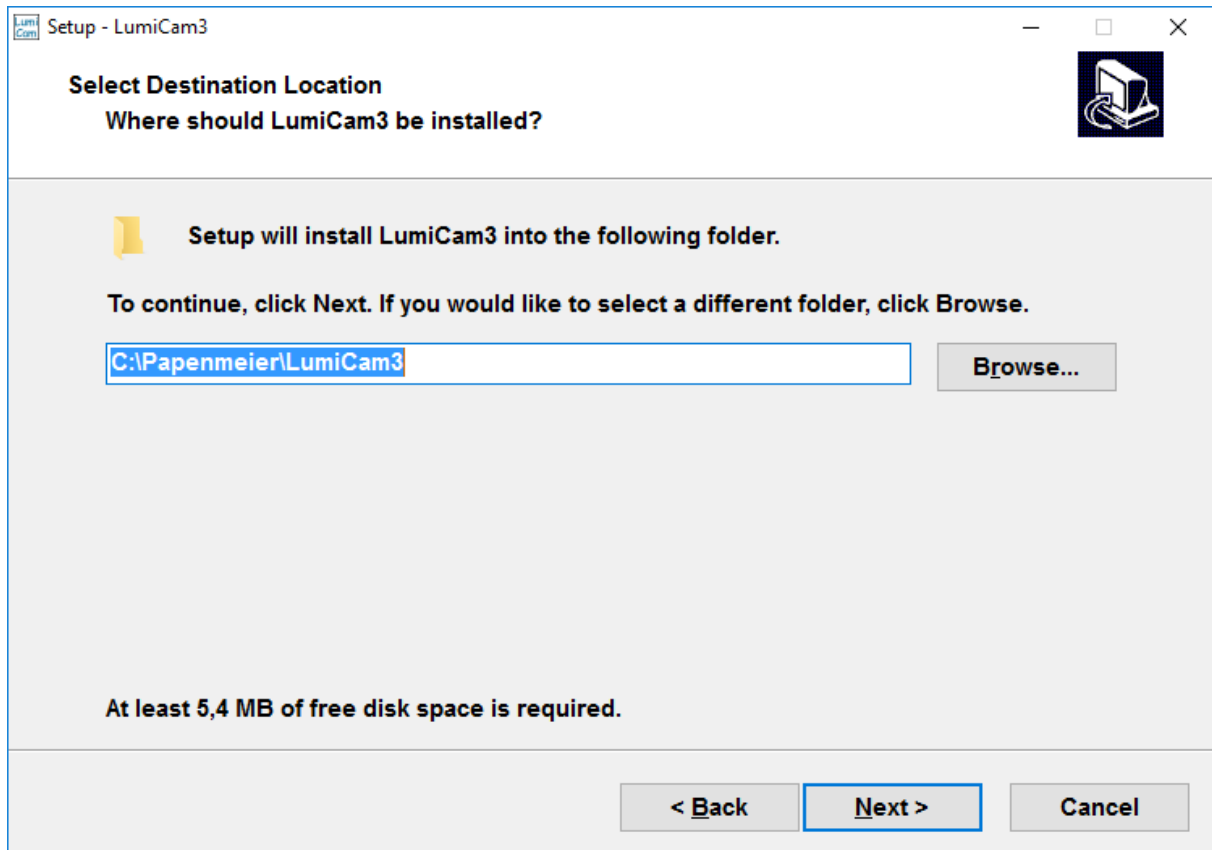
To finish the installation of the drivers, press "Finish".

2.2 LumiCam3

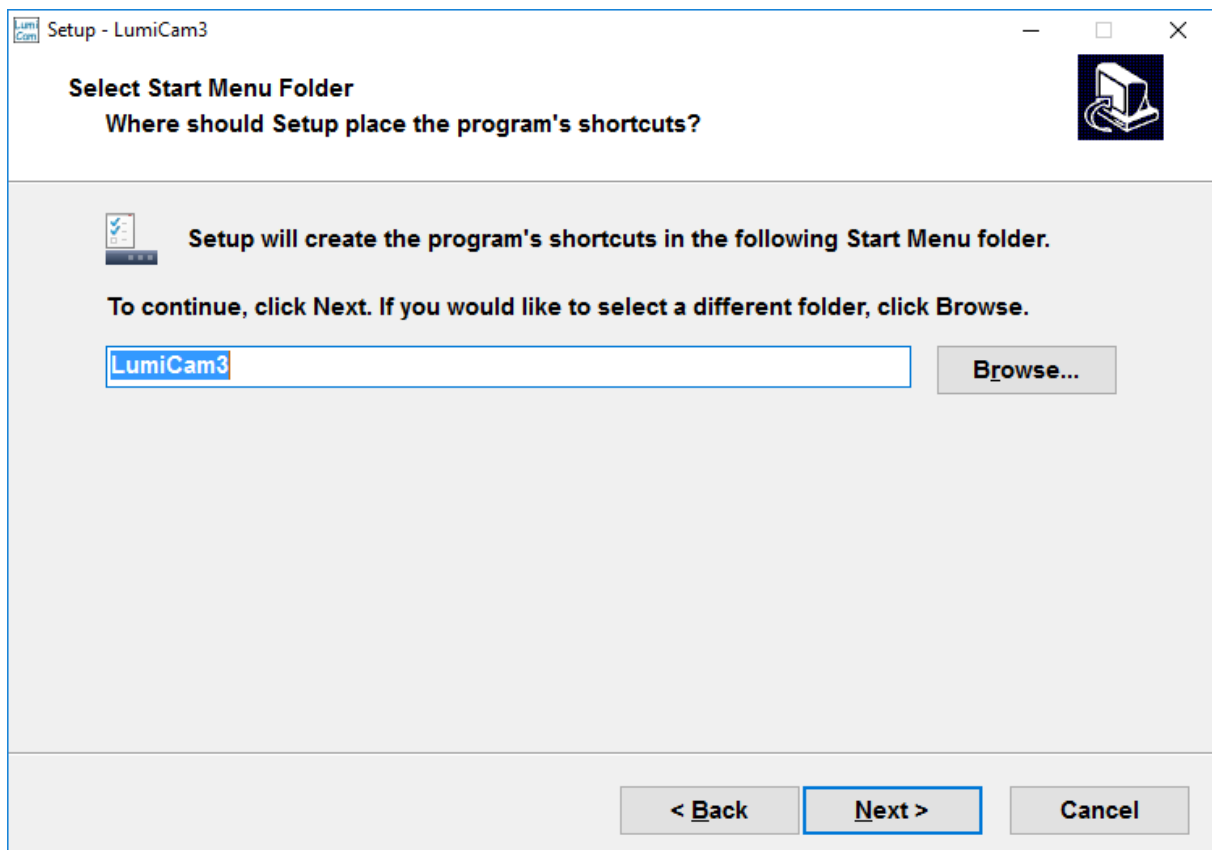
Run the file **LC3SetupD.exe** to start the installation of the software LumiCam3.



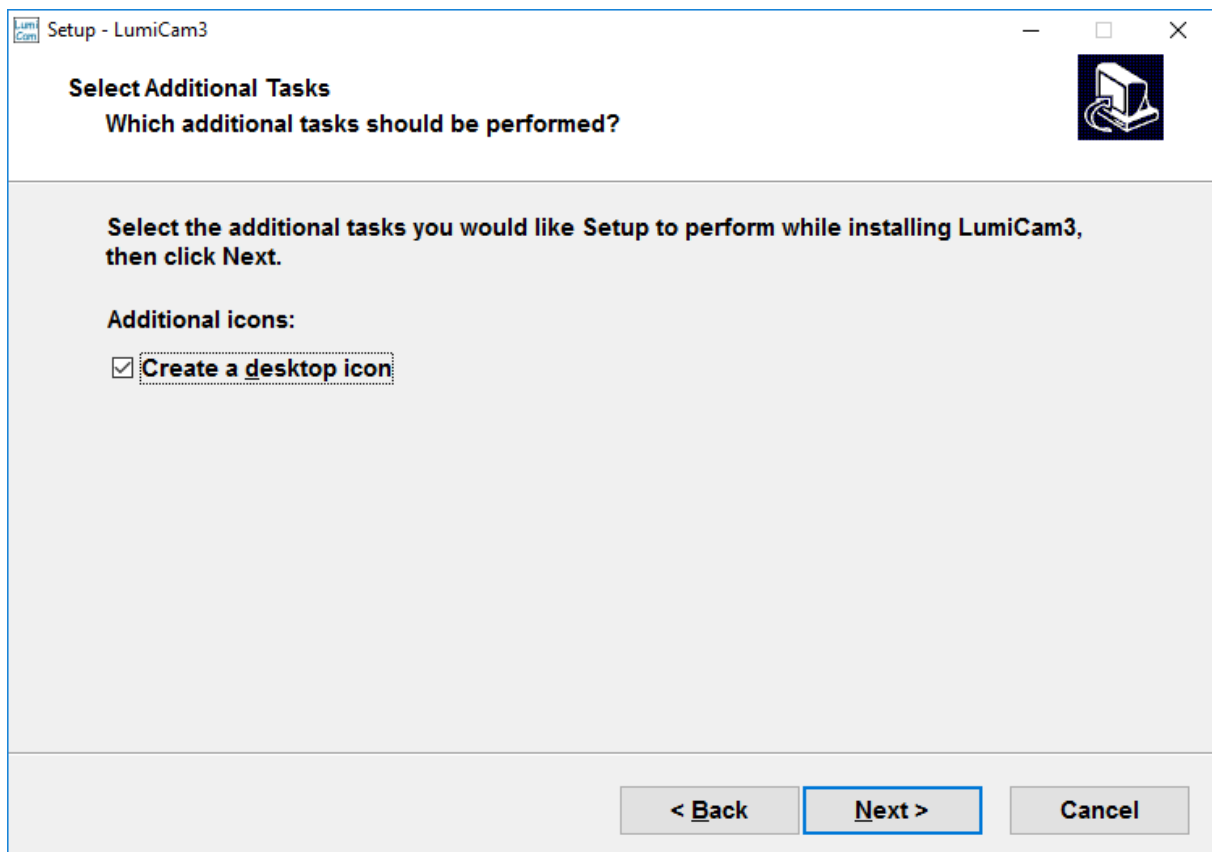
Press "Next"



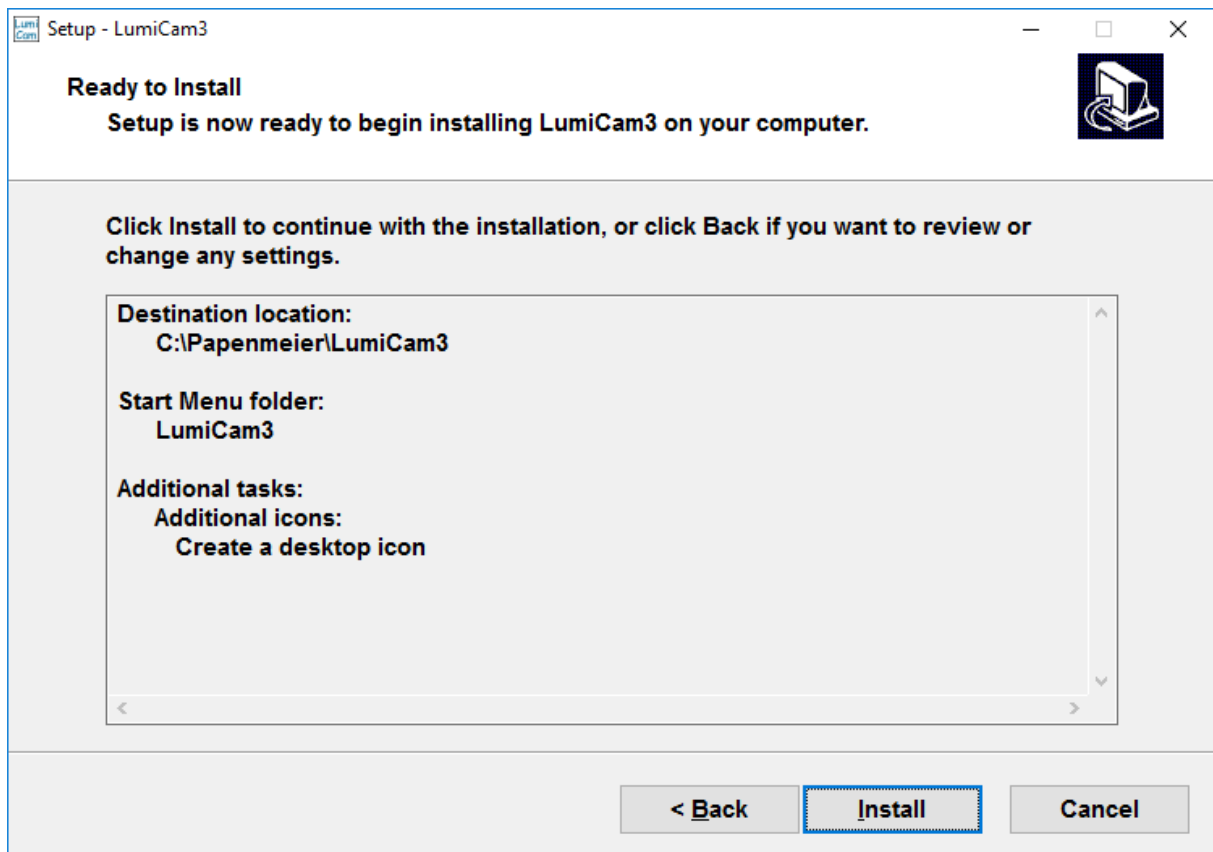
Press "Next" or change the data path to continue.



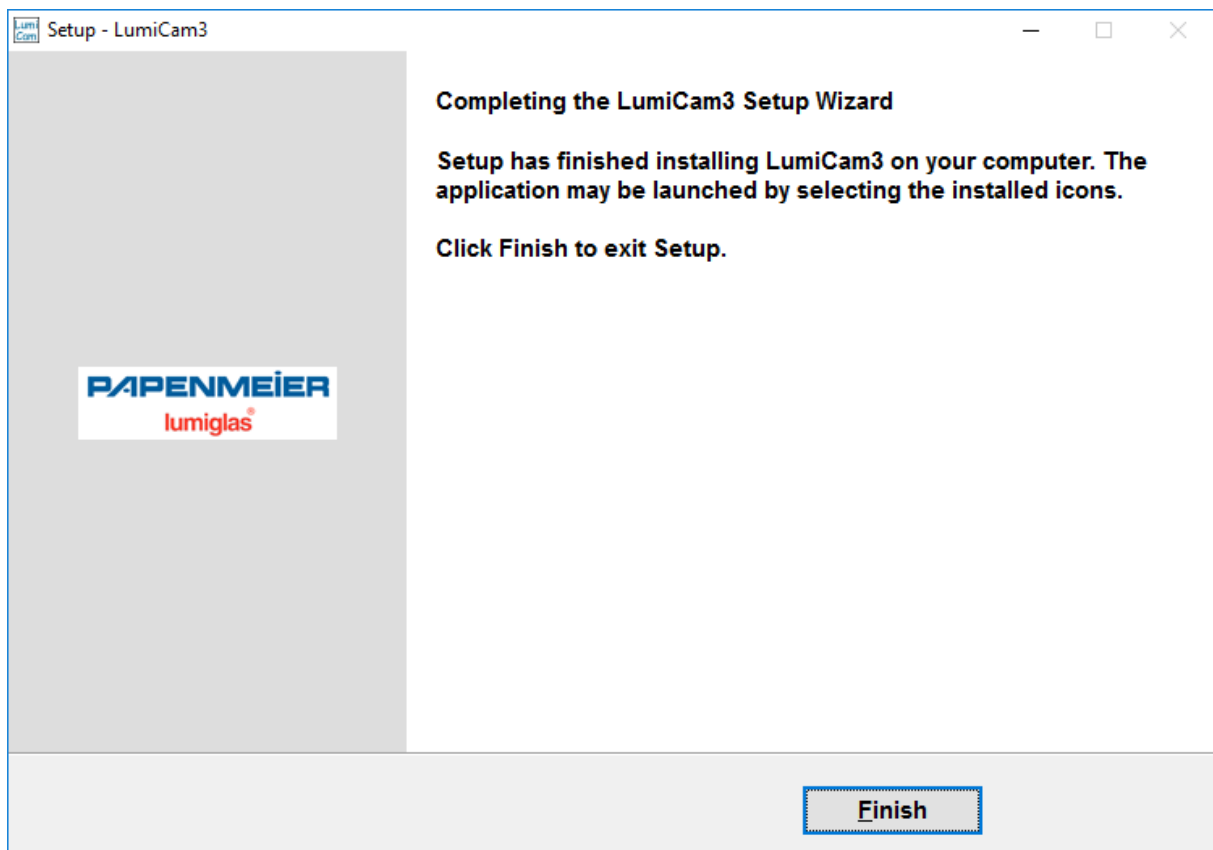
Press "Next" or change the folder settings to continue.



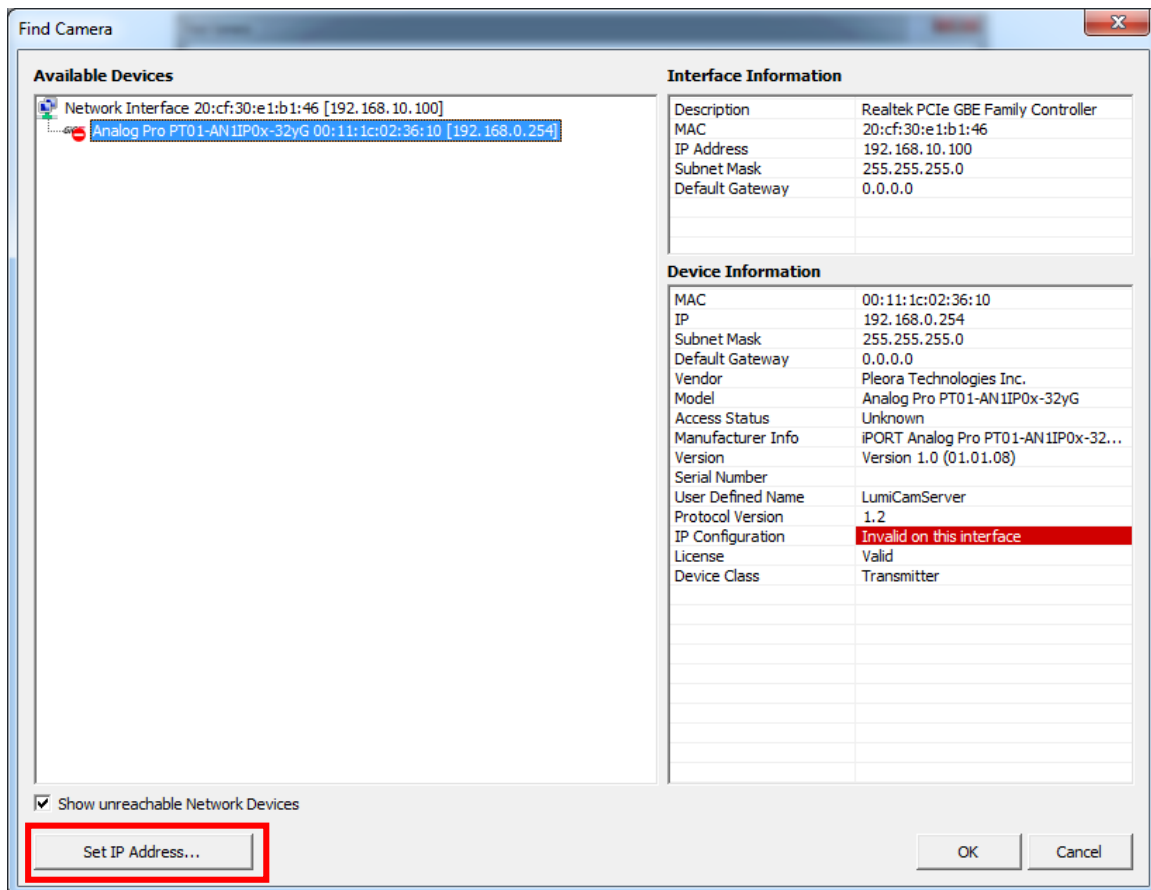
Press "Next".



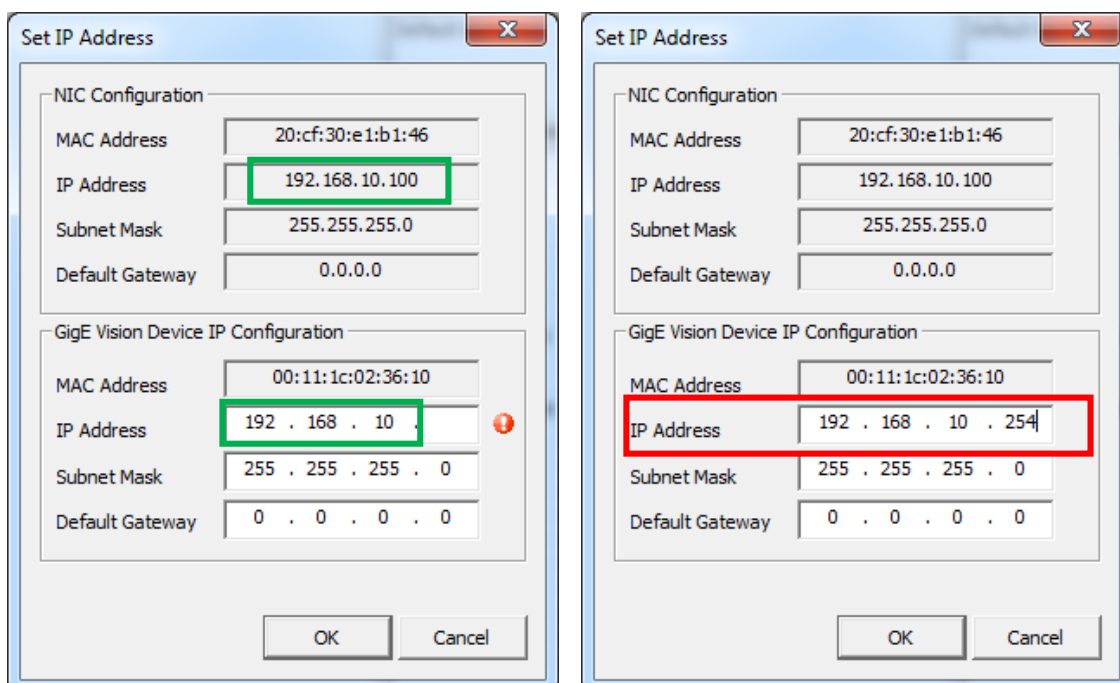
Press "Install" to start the installation.



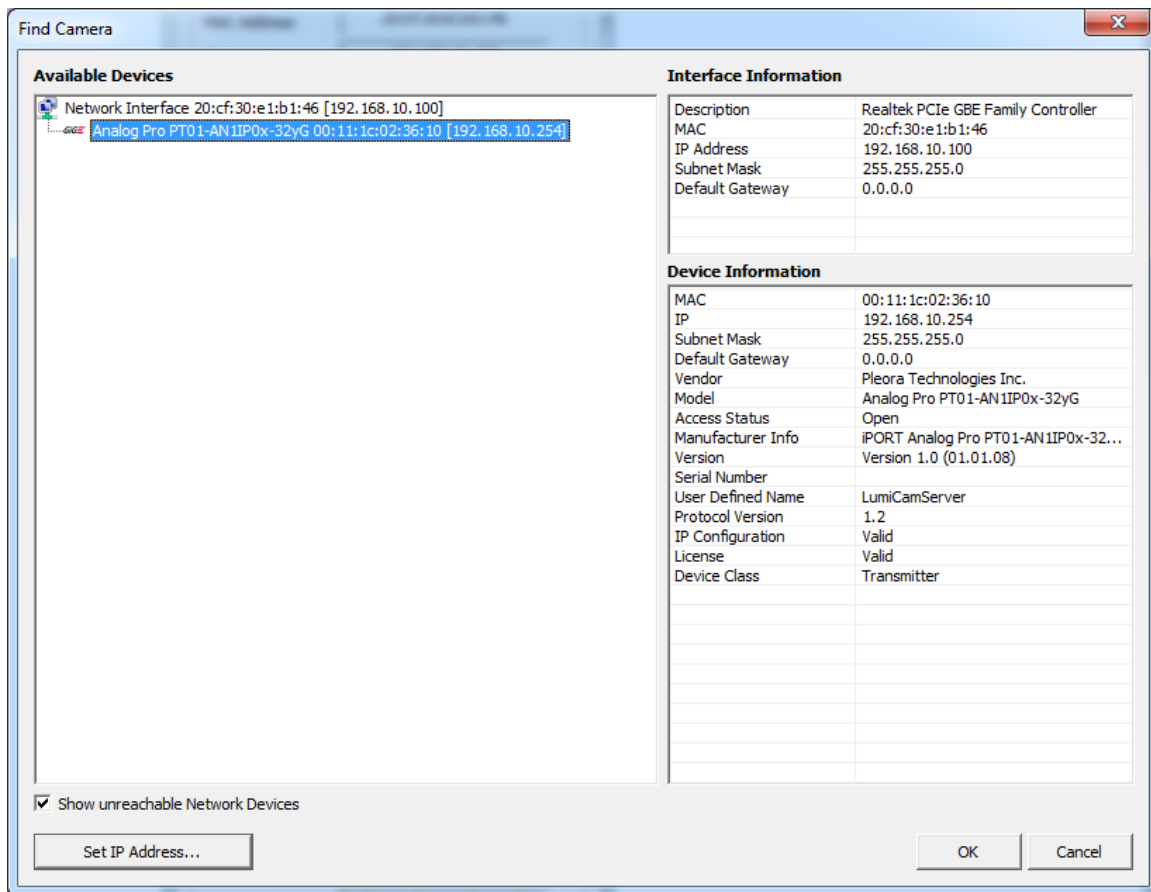
To finish the installation of the software, press "Finish".



Choose the camera **Analog Pro PT01** and press “Set IP Address”.



The IP-address of the computer and the video-server have to be the same, excluded the last number. Please change the address of the video-server (camera) to the ending “254”. If you are using more than one video-server, the ending must vary.

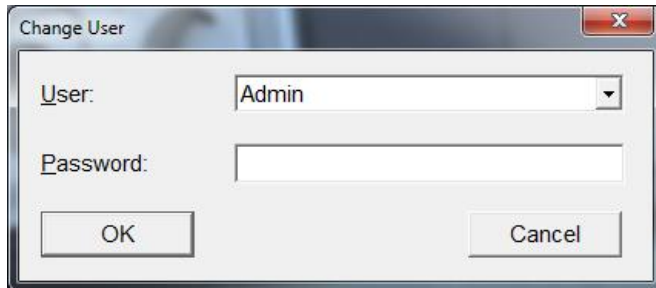


Press "OK" to initialize the camera.

3. LumiCam: Handling

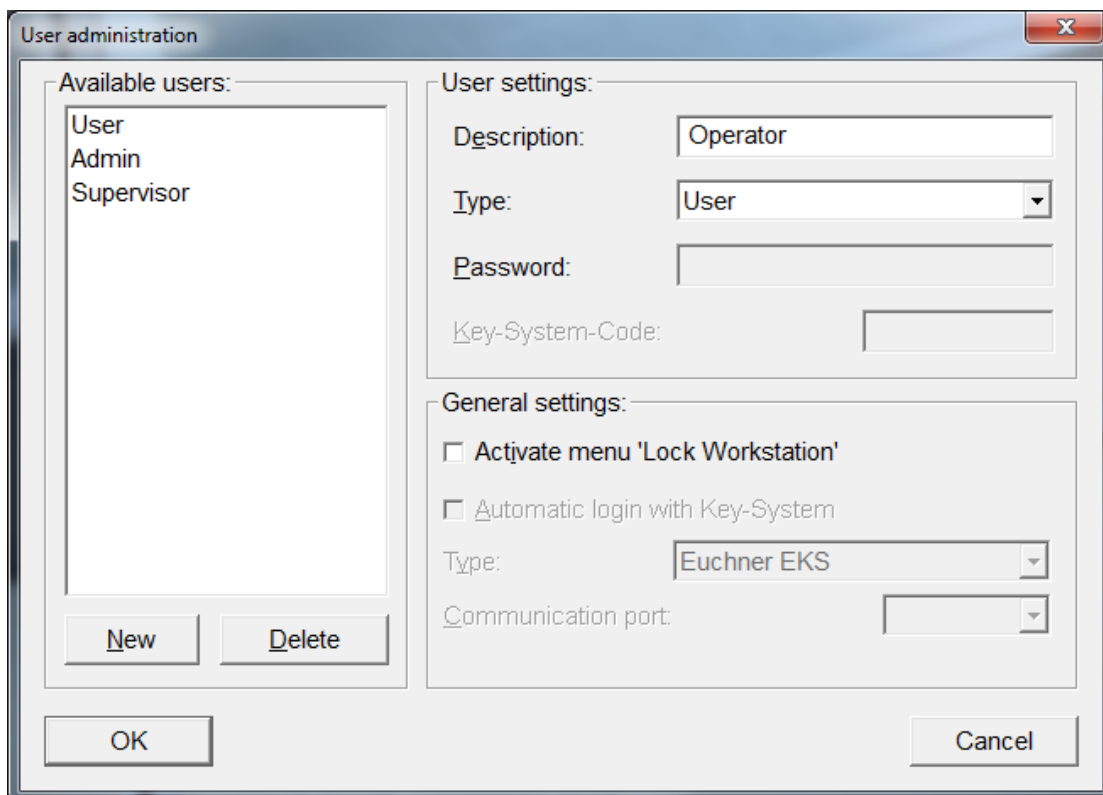
3.1 User authorization

If you want to change or enlarge the settings of the camera, you have to be logged in as administrator.
If you want to change the user authorization, you have to be logged in as supervisor.



The 'Change User' dialog box contains a 'User:' dropdown menu with 'Admin' selected, a 'Password:' text input field, and 'OK' and 'Cancel' buttons.

| Account | Password |
|------------|----------|
| Supervisor | macimul |
| Admin | Admin |



The 'User administration' dialog box is divided into two main sections. On the left, 'Available users:' lists 'User', 'Admin', and 'Supervisor' with 'New' and 'Delete' buttons below. On the right, 'User settings:' includes fields for 'Description' (Operator), 'Type' (User), 'Password', and 'Key-System-Code'. Below this is the 'General settings:' section with checkboxes for 'Activate menu 'Lock Workstation'' and 'Automatic login with Key-System', a 'Type' dropdown (Euchner EKS), and a 'Communication port' dropdown. 'OK' and 'Cancel' buttons are at the bottom.

As supervisor you can change the password of the existing users and also add new users/accounts.

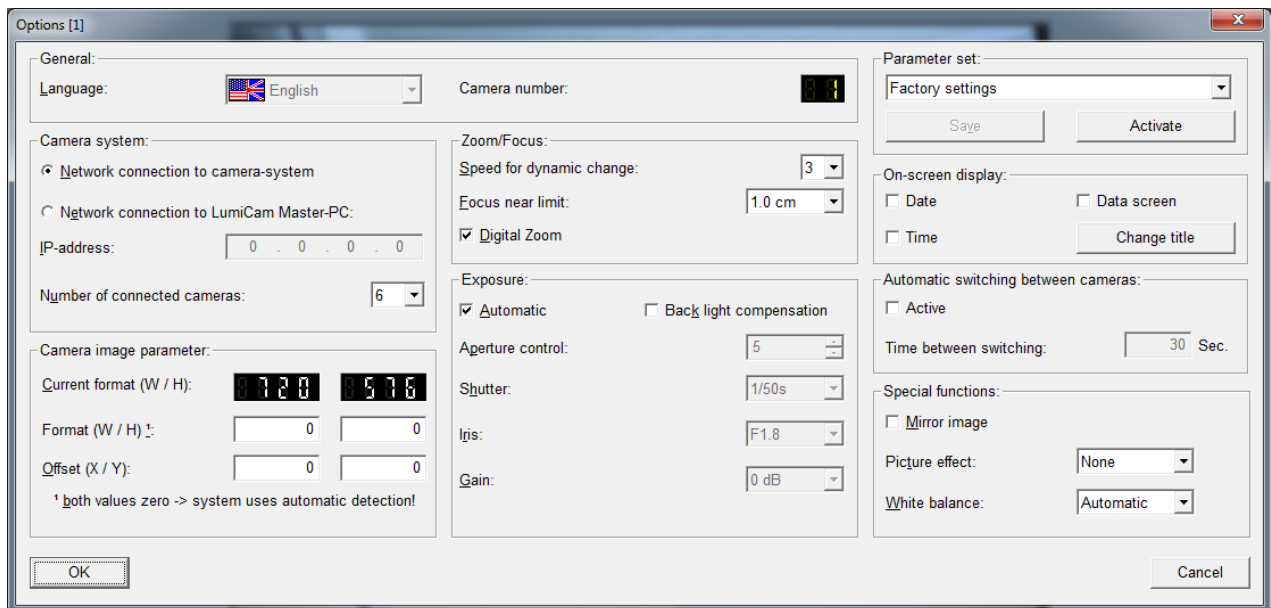
3.2 Options



The software will restart automatically after changing the language.

4. LumiCamAX: Setting the software

4.1 Functions

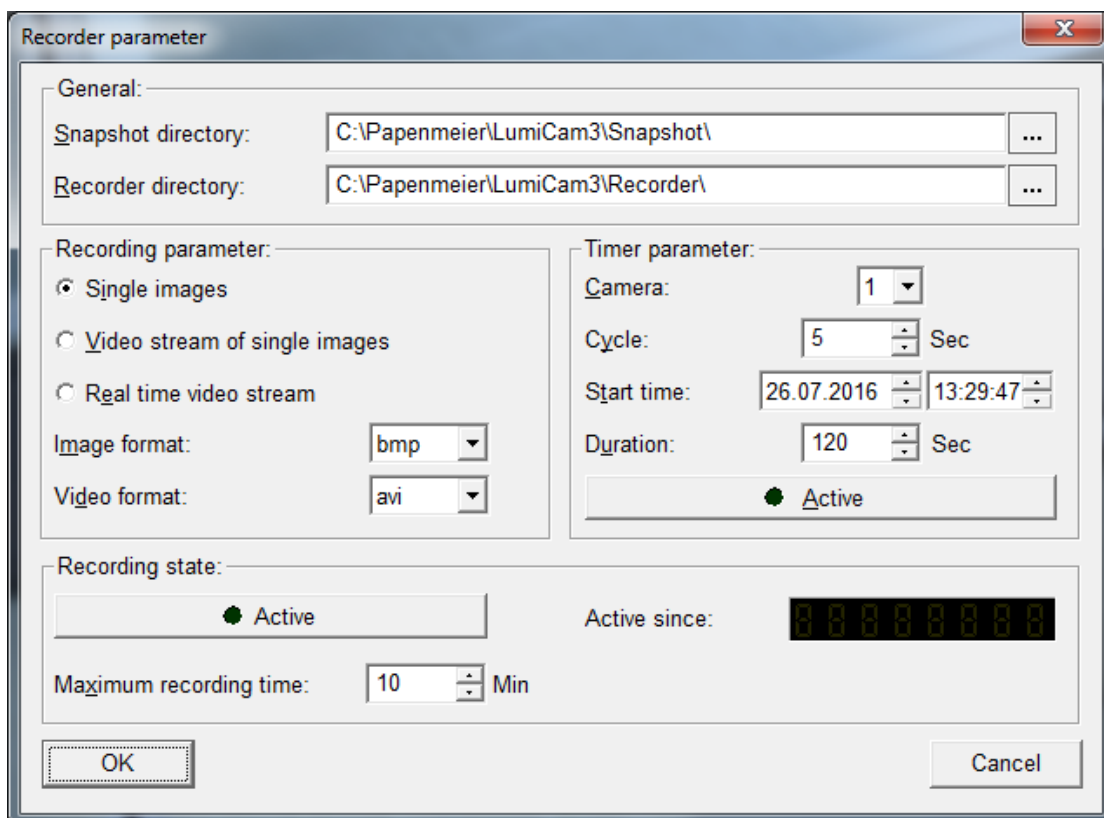


| parameter | functions |
|-----------------------------------------|----------------------------------------------------------------------------------------------------------------------------------------------------------------------|
| Language | Change of the language of the software |
| Network connection to the camera-system | The camera is selected by the previously defined network |
| Network connection to LumiCam Master-PC | Activation of the Master-Slave-Function . The IP-Address of the LumiCam master computer must be selected. |
| Number of connected cameras | The number of cameras can be set here, to shorten the search for cameras. |
| Camera image parameter | The format of the camera image could be customized. If both values are "0", the system uses an automatic detection. (D1) PAL = 720 x 576 (D1) NTSC = 720 x 480 |
| Speed for dynamic change | Set the speed for zoom and focus. (factory settings "3"). |
| Digital Zoom | Activate / deactivate of the digital zoom |
| Exposure: | |
| Automatic | The settings of the exposure could be customized or automatically set up. |
| Back light compensation | If the background is too bright or too dark, the back light compensation could be activated (only by automatic exposure) |
| Aperture control | Adjustable in 16 steps |
| Shutter | Adjustment of the shutter speed |
| Iris | Adjustment of the iris of the camera |
| Gain | Adjustment of the gain of the camera |
| Parameter set | Save the Settings of the Software. You could go back to factory settings. |
| On-screen display: | |
| Date / Time | Activate / deactivate the date and time on the screen of the camera. |
| Data screen | Activate / deactivate the title on the screen of the camera. |
| Change title | The title and the position could be customized. |

| | |
|-------------------------------------|-------------------------------------------------------------------------------------------------------|
| Automatic switching between cameras | Activate / deactivate the automatic switching between the cameras. Time interval could be customized. |
| Mirror Image | The screen will be mirrored. |
| Picture effect | The camera picture could be changed to a black / white or a negative picture. |
| White balance | Automatic Indoor for application inside a room Outdoor for application outside |

4.2 Record parameter

Der integrierte Rekorder der Software beinhaltet mehrere individuelle Einstellungsmöglichkeiten, die Sie auf Ihre Bedürfnisse einstellen können.



| parameter | functions |
|-------------------------------|-----------------------------------------------------------------------------------------------------------|
| Snapshot directory | File path / file directory where the snapshots will be stored. |
| Recorder directory | File path / file directory where the stream will be stored. |
| Image format | Choice of the image format of the snapshots BMP / JPG / GIF |
| Video format | Choice of the video format AVI |
| Camera | Choice of the camera you will record. |
| Single images | According to the adjusted cycle, single images of the camera are made. |
| Video stream of single images | According to the adjusted cycle, single images of the camera are made and put together to a video stream. |
| Real time video stream | Full screen video recording in AVI format. Attention: This recording mode requires a lot of memory |

| | |
|------------------------|-------------------------------------------------------------------------------------------------------------------------------|
| Cycle | Setting the recording cycle (in seconds), where a single image is made. This cycle is not used by the real time video stream. |
| Start time | Timer function of the recorder: adjustment of the date and the time, where the recording should start. |
| Duration | Length of the recording |
| Active | Activate the timer function |
| Recording state: | |
| Active | Activate the recording |
| Active since | Shows you the recording time in seconds |
| Maximum recording time | Defines the maximum recording time of the recorder. When the time is reached, the recorder will stop to record automatically. |

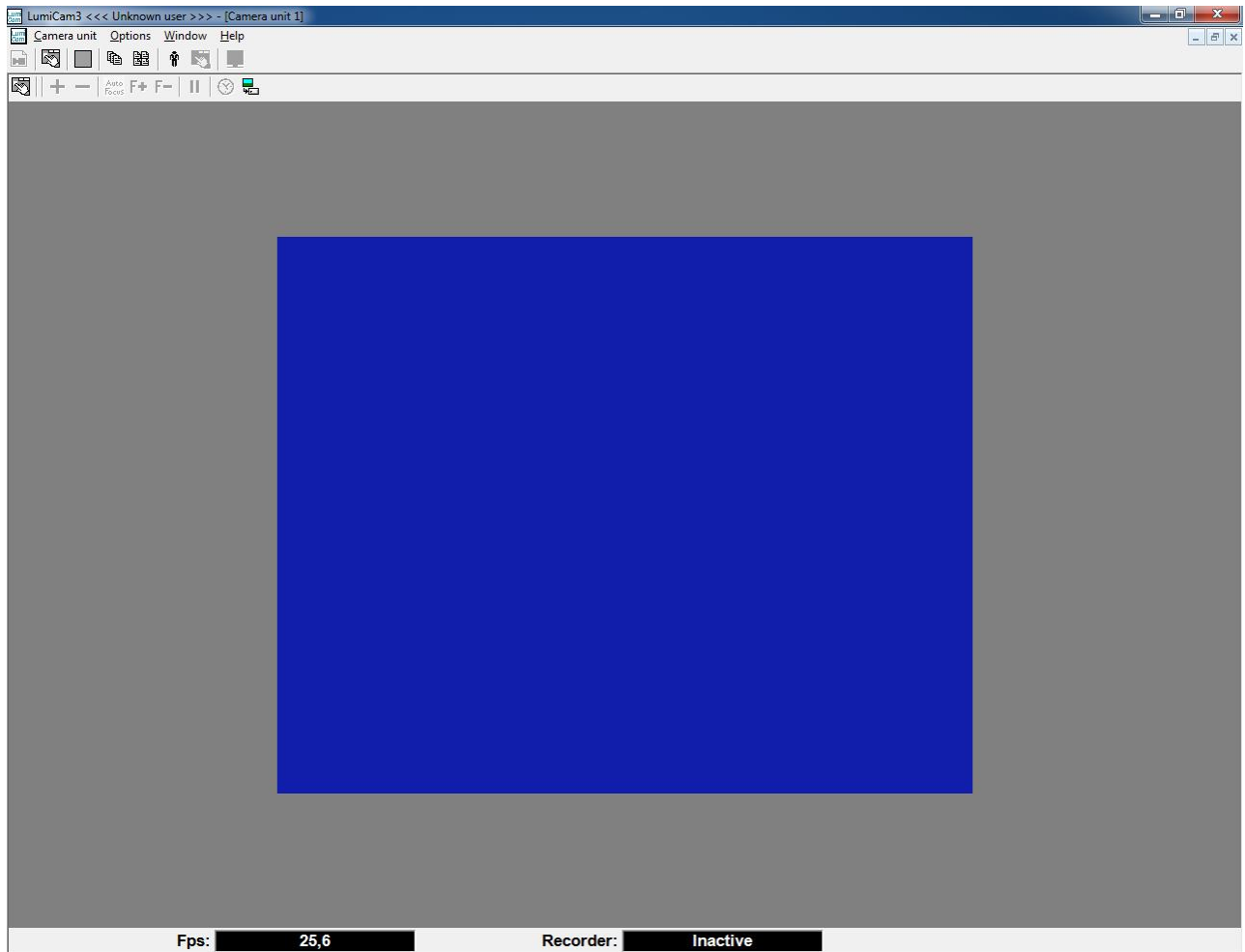
4.3 Menu bar and keyboard

Several functions could be insert via keyboard:

| Shortcut | functions |
|------------|-------------------------------------------|
| O | open the options of the camera |
| 1 - 6 | choose of the active camera systems |
| + | Zoom in |
| - | Zoom out |
| A | activate / deactivate auto-focus-function |
| STRG und + | change of the focus setting, smaller |
| STRG und - | change of the focus setting, greater |
| F | freeze the picture |
| R | open the options of the recorder |
| S | Screenshot |

4.4 Status

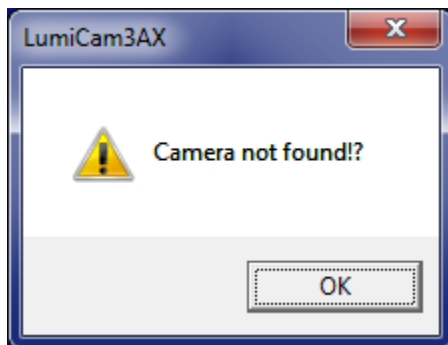
The status bar displays the current frame rate (BPS / FPS) and the status of the recorder.



| status bar recorder | description |
|---------------------|-------------------------------------------------|
| inactive | no recording active |
| timer | the timer function of the recorder is activated |
| active | recording is active |
| slave | It's not possible to record as Slave-PC |

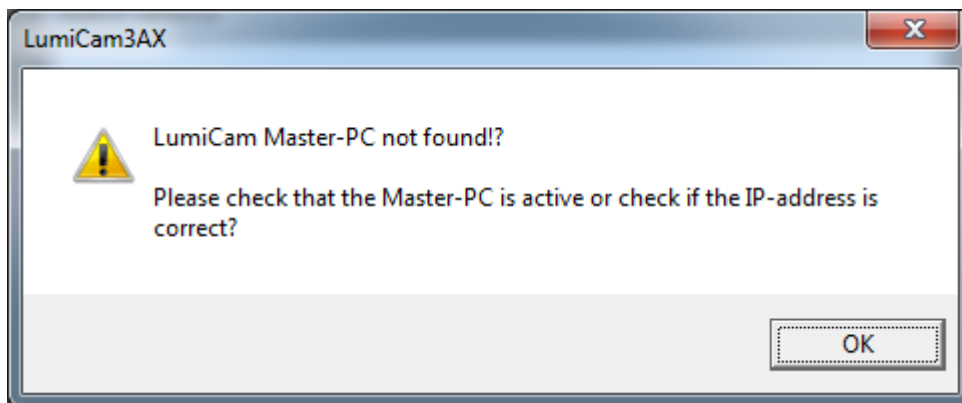
5. Appendix

5.1 Error Message



Check the connection to the camera:

- Are plugs loose?
- Set up of the software / camera are incorrect?
- Is the cable of the camera defect (visual test)?
- Is the camera defect?



- Is the network functioning?
- Is the Master-PC connected to the network?
- Is the stated IP-address of the Master-PC correct?

5.2 Manufacturer

PAPENMEIER

F.H. Papenmeier GmbH & Co. KG

Talweg 2

D - 58239 Schwerte

Tel.: +49 2304 205 0

Fax: + 49 2304 205 206

Web: www.lumiglas.de