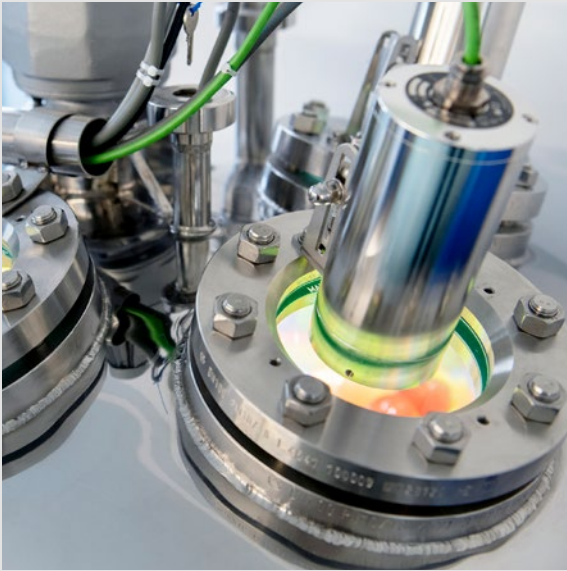


YESTERDAY, TODAY AND IN THE FUTURE

BROAD PERSPECTIVE

- When the main focus is on effectiveness
- Individual solutions with a high integration level and maximum benefits
- Installation is simple and fast:
low-maintenance, robust and durable in use



PAPENMEIER QUALITY

DIN EN ISO 9001: 2015, TÜV NORD



Not the right one?

Lumiglas is your partner for constructive project planning in visual observation. From the CAD drawing via the model to the finished product.

Our worldwide sales network offers you advice and support in local languages.

Feel free to contact us!

Lumistar Lumistrob LS 55LED

The flash unit for a snapshot



Technical changes reserved. 02.22
Picture credits: © sbck.adobe.com; F.H. Papenmeier GmbH & Co. KG

PAPENMEIER

F.H. Papenmeier GmbH & Co. KG, Talweg 2, 58239 Schwerte,
Germany • Phone: +49 2304 205 0 • Fax: +49 2304 205 205
info@lumiglas.de • www.lumiglas.de

technologically leading - humanly close

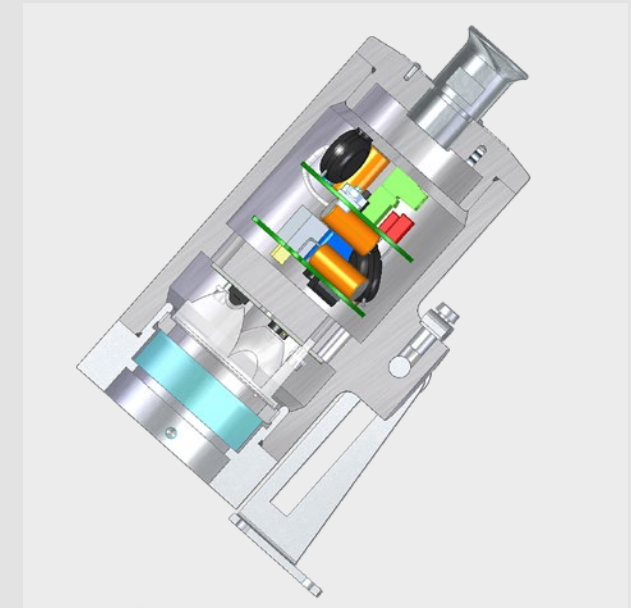
PAPENMEIER

Lumiglas

PROCESS LIGHTING AND VISUAL CONTROL SYSTEMS

Lumistar Lumistrob LS 55LED

Stop of the movement



PRODUCT

- A stroboscope is a flash device that emits flashes of light at very regular intervals.
- In a dark environment, movements appear choppy, like a sequence of still images.
- The human eye quickly gets used to the lightning sequence. It only takes the illuminated moments true. In combination appear with a moving object only single pictures. The picture seems to stand still.



APPLICATION

- With the high-quality Lumistrob you can observe moving processes in stirred containers.
- The robust Lumistrob has been specially designed for use in the chemical and pharmaceutical industry, the cosmetics production or the food industry.
- The Lumistrob is IP65-rated for protection against accidental contact. Dust cannot enter and it is protected against water jets from any direction.



TECHNICAL SPECIFICATIONS

- The frequency of the Lumistrob can be set using two buttons
- Frame rate: 1 to 110 Hz
- Pulse width: 1 ms
- Different voltage ranges
- 24 V or 120-230 V
- External triggering: external voltage pulse from 12 to 24 V, maximum 1 KHz